

KEY FEATURES

SHORT MOTOR CONSTRUCTION

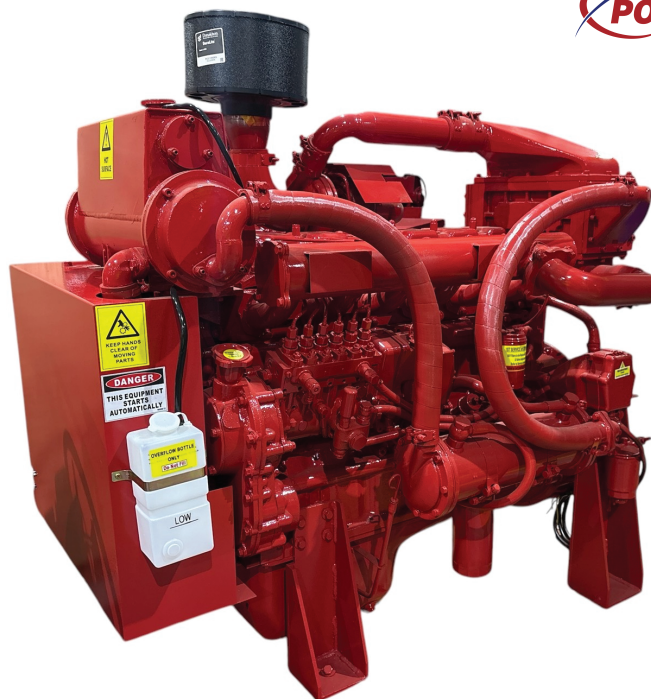
- Cast Iron Block
- Wet Liners
- Fully Floating Pistons
- Nodular Iron Crankshaft
- High Volume Oil Pump
- High Volume Oil Sump

CYLINDER HEAD

- Cast Iron Cylinder Head
- Adjustable Rocker Arms
- Rubber Valve Gasket

CONSTRUCTION

- Heavy Duty Design
- High Volume Cooling System
- Simple, Maintenance Free, High Pressure Fuel System
- Direct Injection Combustion Chamber
- P Type Injectors
- High Flow Fuel, Oil & Donaldson Air Filters



MAXIMUM POWER RATING - For 'HP' MULTIPLY x 1.34

Power Output Rated 190kW @ 2000rpm

Model	1600rpm	1800rpm	1900rpm	2000rpm
DP6800Ti	170kW	190kW	190kW	190kW

PRODUCT CHARACTERISTICS



DESIGN & QUALITY

BKB Group firepump engines offer industry leading value for money. Proven quality and Australian design, powering over thousands of firepumps nationwide. All engines come backed by a 2 year warranty and are constructed to last. When the job needs to be done, you can rely on BKB Engines to perform.



SERVICE KITS

All engines can be supplied with service kits. All parts used in service are readily available, high quality parts including Donaldson filters. Kits provide a complete ready package for servicing. Included in the kits are belt set, hose kit and all filters; oil, primary and secondary fuel and air cleaners.



CONTROLLER

The BKB Group diesel engine control system delivers simplicity and reliability. Proudly Australian designed and built to AS2941-2013 (Fixed Fire-Pumpset Systems). Available in 12V & 24V. Monitors, displays and records diesel engine information. The construction incorporates high quality industrial components and an advanced microprocessor controller.

FIREPUMP DP6800Ti DIESEL POWER PACK

HEAT EXCHANGER COOLED

DESIGN SPECIFICATIONS

Model	DP6800Ti
Type	Inline 6 Cylinder - 2 Valve P/Cyl - OHV
Fuel	Direct Injection - Inline Pump - Electric Governor
Bore/Stroke	108 x 135
Capacity	7.5Ltr
Compression	16:5:1
Intake	Turbocharged
Cooling	Water
Voltage	24V
Min Speed	850rpm
Max Speed	2000rpm

SERVICE INFORMATION

Fuel Filter	Donaldson P550127
Oil Filter	Donaldson P550965
Air Filter	Donaldson C105003
Oil Capacity	18 Ltrs
Recommended Battery - Min	600CCA x 2 / 90 A/H x 2
Bell Housing	SAE1
Cooling System Capacity	19ltrs
Drive	SAE 11.5"
Service Interval	First Service at 12month/ 150hrs then each 12month/250Hours
Coolant	Glycol
Oil Type	15W40 - SAE30
Major Service	2yrs/1000hrs of operation

POWER PACK PRODUCED WITH:

- Compliance with AS2941-2013
- Oil Pressure Sender & Temp Sender
- SAE 11.5" Flywheel
- Mounting Feet
- Belt Guard
- Flexible Exhaust Coupling
- Condensation Trap & Muffler
- Pull to Stop Solenoid
- Oil & Coolant
- Jacket Heater

ELECTRICAL

Starter Motor	24V - 5kW - Reduction Drive
Alternator	24V - 40Amp
Oil Pressure Sender	10 Bar (VDO Compatible)
Temp Sender	30 - 120°C
RPM Sensor	Magnetic Pulse Type - M18 x 1.5
Fuel STOP Solenoid	24V - Pull to Stop - Two Wire - Body Earth

ENGINE SPECIFICATIONS

Fuel Consumption @ 75% Load - 2200rpm	.240gr/kWhr
Approx Fuel Consumption at 100% load - 2600rpm	39ltrs per/hour
Cooling Water Supply	2.45Ltrs/sec@20°C
Intake Air Flow	170ltrs/sec
Exhaust Pipe Size	4"/100mm
Exhaust Flow	595 ltrs/sec
Exhaust Heat Rejection	148kW
Heat Rejection to Atmosphere	21kW
Cooling System Heat Rejection	171kW
Exhaust Temp Max	600°C
Max Exhaust Backpressure	7kPa
Max Coolant Temp	76°C

COOLING SYSTEM

Type	Heat Exchanger Cooled
------	-----------------------

ENGINE MOUNTING

Mounting Bolts	M16
----------------	-----

Note:

Variations to engines may be made without notice.

FIREPUMP DP6800Ti DIESEL POWER PACK

HEAT EXCHANGER COOLED

