

## KEY FEATURES

### SHORT MOTOR CONSTRUCTION

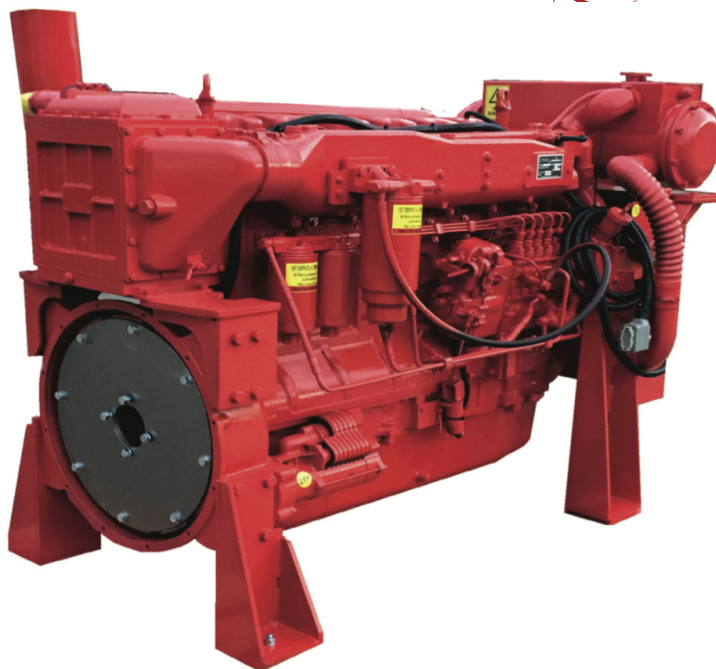
- Cast Iron Block
- Wet Liners
- Fully Floating Pistons
- Nodular Iron Crankshaft
- High Volume Oil Pump
- High Volume Oil Sump

### CYLINDER HEAD

- Individual Cast Iron Cylinder Heads
- Adjustable Rocker Arms
- Rubber Valve Gasket

### CONSTRUCTION

- Heavy Duty Design
- High Volume Cooling System
- Simple, Maintenance Free, High Pressure Fuel System
- Direct Injection Combustion Chamber
- P Type Injectors
- High Flow Fuel, Oil & Donaldson Air Filters



## MAXIMUM POWER RATING - For 'HP' MULTIPLY x 1.34

Power Output Rated 460kW @ 2200rpm

Model	1500rpm	1600rpm	1700rpm	2200rpm
DP61150Ti-460	368kW	399kW	428kW	460kW

## PRODUCT CHARACTERISTICS



### DESIGN & QUALITY

BKB Group firepump engines offer industry leading value for money. Proven quality and Australian design, powering over thousands of firepumps nationwide. All engines come backed by a 2 year warranty and are constructed to last. When the job needs to be done, you can rely on BKB Engines to perform.



### SERVICE KITS

All engines can be supplied with service kits. All parts used in service are readily available, high quality parts including Donaldson filters. Kits provide a complete ready package for servicing. Included in the kits are belt set, hose kit and all filters; oil, primary and secondary fuel and air cleaners.



### CONTROLLER

The BKB Group diesel engine control system delivers simplicity and reliability. Proudly Australian designed and built to AS2941-2013 (Fixed Fire-Pumpset Systems). Available in 12V & 24V. Monitors, displays and records diesel engine information. The construction incorporates high quality industrial components and an advanced microprocessor controller.

## DESIGN SPECIFICATIONS

Model	DP61150Ti-460
Type	Inline 6 Cylinder - 2 Valve P/Cyl - OHV
Fuel	Direct Injection - Inline Pump - Electronic Governor
Bore/Stroke	127 x 165
Capacity	12.7Ltr
Compression	15:5:1
Intake	Turbocharged
Cooling	Water
Voltage	24V
Min Speed	850rpm
Max Speed	2200rpm

## SERVICE INFORMATION

Fuel Filter	Call to advise
Oil Filter	Donaldson P553771 x2
Air Filter	Donaldson C125004
Oil Capacity	25 Ltrs
Recommended Battery - Min	720CCA x 2 / 120 A/H x 2
Bell Housing	SAE1
Cooling System Capacity	55ltrs
Drive	SAE 14"
Service Interval	First Service at 12month/ 150hrs then each 12month/250Hours
Coolant	Glycol
Oil Type	15W40 - SAE30
Major Service	2yrs/1000hrs of operation

## POWER PACK PRODUCED WITH:

- Compliance with AS2941-2013
- Oil Pressure Sender & Temp Sender
- SAE 11.5" Flywheel
- Mounting Feet
- Belt Guard
- Flexible Exhaust Coupling
- Condensation Trap & Muffler
- Pull to Stop Solenoid
- Oil & Coolant
- Jacket Heater

## ELECTRICAL

Starter Motor	24V - 7kW - Reduction Drive
Alternator	24V - 40Amp - External Regulator
Oil Pressure Sender	10 Bar (VDO Compatible)
Temp Sender	30 - 120°C
RPM Sensor	Magnetic Pulse Type - M18 x 1.5
Fuel STOP Solenoid	24V - Pull to Stop - Two Wire - Body Earth

## ENGINE SPECIFICATIONS

Fuel Consumption @ 75% Load - 2200rpm	.205gr/kWhr
Approx Fuel Consumption at 100% load - 2600rpm	130ltrs per/hour
Cooling Water Flow	7.5ltrs/sec
Intake Air Flow	540ltrs/sec
Exhaust Pipe Size	5"/125mm
Exhaust Flow	1560 ltrs/sec
Exhaust Heat Rejection	368kW
Heat Rejection to Atmosphere	72kW
Cooling System Heat Rejection	360kW
Exhaust Temp Max	600°C
Max Exhaust Backpressure	7kPa
Max Coolant Temp	85°C

## COOLING SYSTEM

Type	Radiator Cooled
------	-----------------

## ENGINE MOUNTING

Mounting Bolts	M16
----------------	-----

### Note:

Variations to engines may be made without notice.