

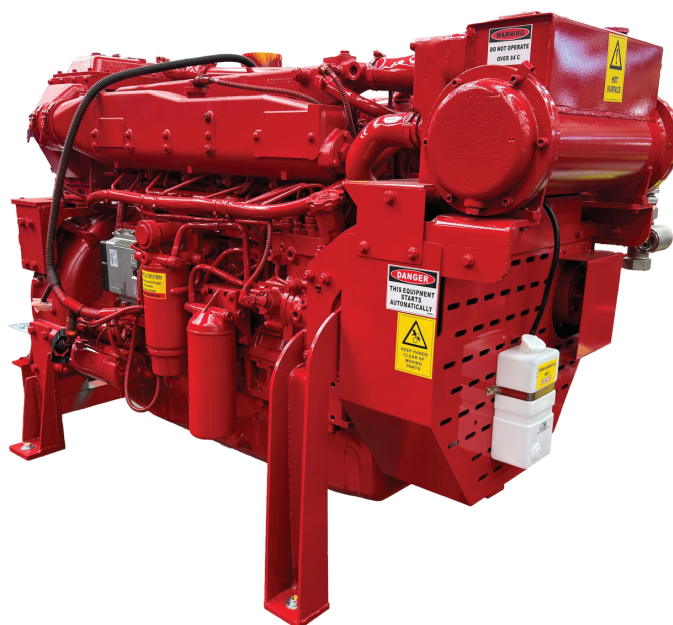
OVERVIEW

Tier 3a Emission Rated engine fitted with High Pressure Common Rail Fuel Injection System.

J1939 communication provides flexibility of engine monitoring and speed control in a range of applications.

Proudly Australian Engineered Driver Package to AS2941-2013 Standard.

Rugged and durable platform reflecting the 20 years that POWERMaXX has been at the forefront of the fire pump industry in Australia.



MAXIMUM POWER RATING - For 'HP' MULTIPLY x 1.34

Power Output Rated 248kW @ 2200rpm

Model	1500rpm	1800rpm	2100rpm	2200rpm
DP6970Ti-CRDi	225kW	248kW	248kW	248kW

PRODUCT CHARACTERISTICS



DESIGN & QUALITY

BKB Group firepump engines offer industry leading value for money. Proven quality and Australian design, powering over thousands of firepumps nationwide. All engines come backed by a 2 year warranty and are constructed to last. When the job needs to be done, you can rely on BKB Engines to perform.



SERVICE KITS

All engines can be supplied with service kits. All parts used in service are readily available, high quality parts including Donaldson filters. Kits provide a complete ready package for servicing. Included in the kits are belt set, hose kit and all filters; oil, primary and secondary fuel and air cleaners.



CONTROLLER

The BKB Group diesel engine control system delivers simplicity and reliability. Proudly Australian designed and built to AS2941-2013 (Fixed Fire-Pumpset Systems). Available in 12V & 24V. Monitors, displays and records diesel engine information. The construction incorporates high quality industrial components and an advanced microprocessor controller.

DESIGN SPECIFICATIONS

Model	DP6970Ti-CRDi
Type	Inline 6 Cylinder - 2 Valve P/Cyl - OHV
Fuel	Direct Injection - Common Rail High Pressure - ECU Control
Bore/Stroke	126 x 130
Capacity	9.7Ltr
Compression	16:5:1
Intake	Turbocharged
Cooling	Water
Voltage	24V
Min Speed	850rpm
Max Speed	2200rpm

SERVICE INFORMATION

Fuel Filter	Donaldson P5& P550529
Oil Filter	Donaldson P553771 x2
Air Filter	Donaldson C125004
Oil Capacity	25 Ltrs
Recommended Battery - Min	700CCA x 2 / 100 A/H x 2
Bell Housing	SAE1
Cooling System Capacity	30ltrs
Drive	SAE 14"
Service Interval	First Service at 12month/ 150hrs then each 12month/250Hours
Coolant	Mix 40% Glycol Mix
Oil Type	15W40 - SAE30
Major Service	2yrs/1000hrs of operation

POWER PACK PRODUCED WITH:

- Compliance with AS2941-2013
- Oil Pressure Sender & Temp Sender
- SAE 11.5" Flywheel
- Mounting Feet
- Belt Guard
- Flexible Exhaust Coupling
- Condensation Trap & Muffler
- Pull to Stop Solenoid
- Oil & Coolant
- Jacket Heater

ELECTRICAL

Starter Motor	24V - 7kW - Reduction Drive
Alternator	24V - 40Amp - External Regulator
Oil Pressure Sender	-
Temp Sender	N/A
RPM Sensor	-
ECU Communication	J1939

ENGINE SPECIFICATIONS

Fuel Consumption @ 75% Load - 2200rpm	.240gr/kWhr
Approx Fuel Consumption at 100% load - 2600rpm	70ltrs per/hour
Cooling Water Supply	Max Press In - 200kPa
Intake Air Flow	310ltrs/sec
Exhaust Pipe Size	4"/100mm
Exhaust Flow	790 ltrs/sec
Exhaust Heat Rejection	198kW
Heat Rejection to Atmosphere	24kW
Cooling System Heat Rejection	178kW
Exhaust Temp Max	600°C
Max Exhaust Backpressure	7kPa
Max Coolant Temp	85°C

COOLING SYSTEM

Type	Heat Exchanger Cooled - Tube Type
------	-----------------------------------

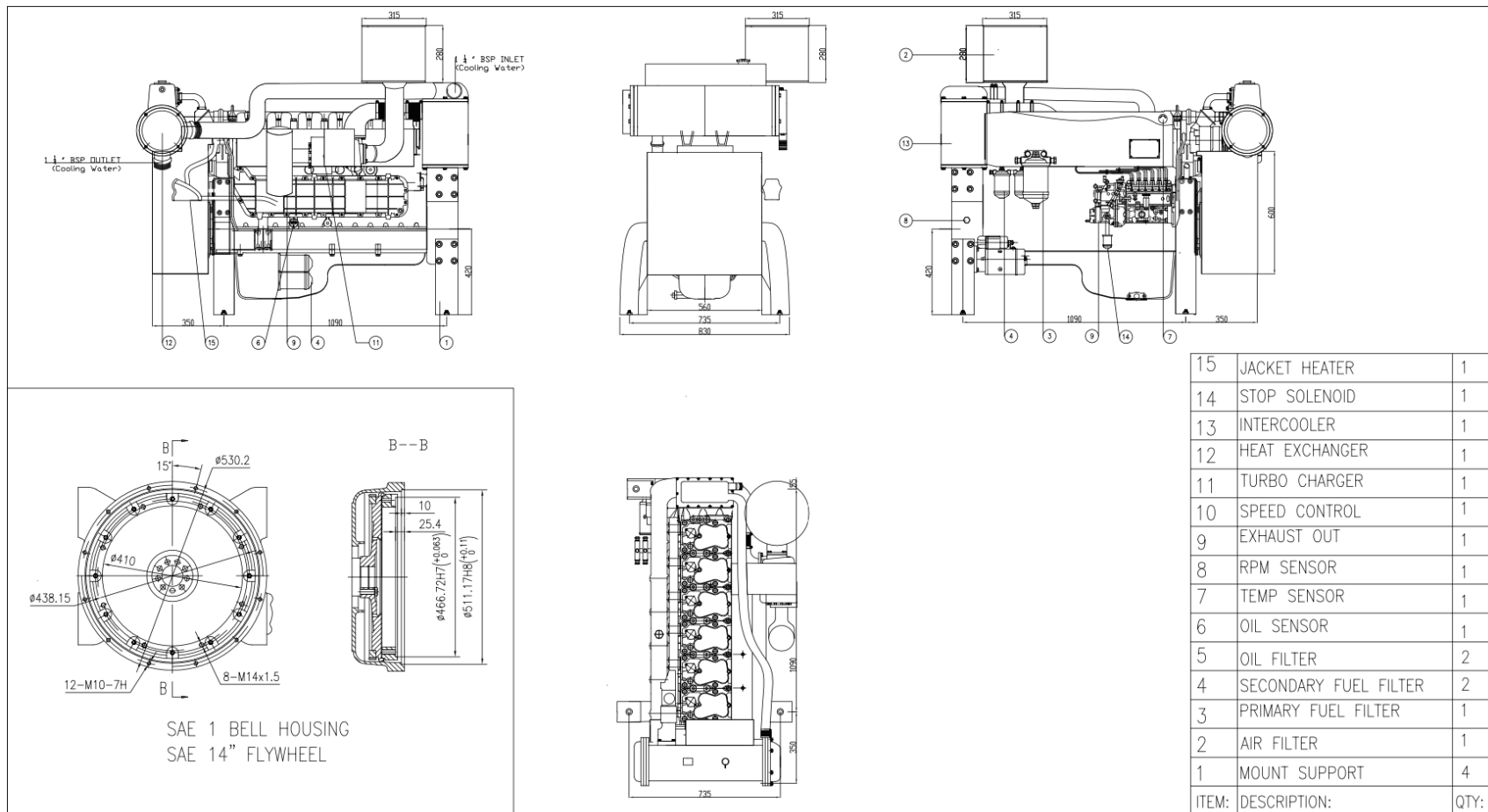
ENGINE MOUNTING

Mounting Bolts	M16
----------------	-----

Note:

Variations to engines may be made without notice.

FIREPUMP DP6970Ti-CRDi DIESEL POWER PACK HEAT EXCHANGER COOLED



DRAWING TITLE:
DP-6970Ti-CRDi, Heat Exchanger: General Arrangement

1	REVISED ENGINE DRAWING	09/11/2017	M.O.Y.
REV:	DESCRIPTION:	DATE:	DRAWN BY:

NOTES:

- ALL DIMENSIONS SHOULD BE VERIFIED BEFORE INSTALLATION.
- NO PORTION OF THIS DRAWING MAY BE REPRODUCED OR ALTERED WITHOUT WRITTEN PERMISSION FROM POWER INDUSTRIES AUSTRALIA.
- ALL DIMENSIONS ARE IN MM.

TOLERANCES:

ASSEMBLY DIMENSIONS $\pm 3\text{MM}$
FABRICATED DIMENSIONS $\pm 2\text{MM}$
MACHINING DIMENSIONS $\pm 0.125\text{MM}$
UNLESS SPECIFIED OTHERWISE

REVIEWED BY:	SCOTT LACEY
DWG NO:	DWG-DP6970Ti.HX-01
SCALE:	Not to Scale
REV:	1

ADDRESS:
38-40 LICOLA DRIVE,
DANDENONG SOUTH, 3175

PHONE NO:
1300 188 477