

### KEY FEATURES

#### SHORT MOTOR CONSTRUCTION

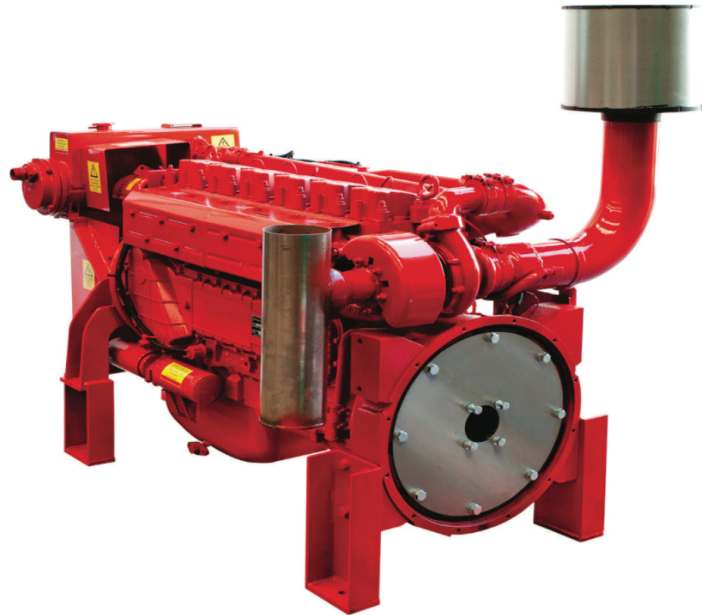
- Cast Iron Block
- Wet Liners
- Fully Floating Pistons
- Nodular Iron Crankshaft
- High Volume Oil Pump
- High Volume Oil Sump

#### CYLINDER HEAD

- Individual Cast Iron Cylinder Heads
- Adjustable Rocker Arms
- Rubber Valve Gasket

#### CONSTRUCTION

- Heavy Duty Design
- High Volume Cooling System
- Simple, Maintenance Free, High Pressure Fuel System
- Direct Injection Combustion Chamber
- High Flow Fuel, Oil & Donaldson Air Filters



### MAXIMUM POWER RATING - For 'HP' MULTIPLY x 1.34

Power Output Rated 210kW @ 2500rpm

Model	1800rpm	2000rpm	2200rpm	2500rpm
<b>DP6970T-CRDi</b>	186kW	194kW	202kW	210kW

### PRODUCT CHARACTERISTICS



#### DESIGN & QUALITY

BKB Group firepump engines offer industry leading value for money. Proven quality and Australian design, powering over thousands of firepumps nationwide. All engines come backed by a 2 year warranty and are constructed to last. When the job needs to be done, you can rely on BKB Engines to perform.



#### SERVICE KITS

All engines can be supplied with service kits. All parts used in service are readily available, high quality parts including Donaldson filters. Kits provide a complete ready package for servicing. Included in the kits are belt set, hose kit and all filters; oil, primary and secondary fuel and air cleaners.



#### CONTROLLER

The BKB Group diesel engine control system delivers simplicity and reliability. Proudly Australian designed and built to AS2941-2013 (Fixed Fire-Pumpset Systems). Available in 12V & 24V. Monitors, displays and records diesel engine information. The construction incorporates high quality industrial components and an advanced microprocessor controller.

## DESIGN SPECIFICATIONS

Model	DP6970T-CRDi
Type	Inline 6 Cylinder - 2 Valve P/Cyl - OHV
Fuel	Direct Injection – High Pressure Common Rail Fuel System
Bore/Stroke	126 x 130
Capacity	9.7Ltr
Compression	16:5:1
Intake	Turbocharged
Cooling	Water
Voltage	24V
Min Speed	850rpm
Max Speed	2500rpm

## SERVICE INFORMATION

Fuel Filter	P550932 x2 & P550778
Oil Filter	Donaldson P553771 x 2
Air Filter	Donaldson C125004
Oil Capacity	25 Ltrs
Recommended Battery - Min	720CCA x 2 / A/H x 2
Bell Housing	SAE1
Cooling System Capacity	30ltrs
Drive	SAE 14"
Service Interval	First Service at 12month/ 150hrs then each 12month/250Hours
Coolant	Mix 40% Glycol Mix
Oil Type	15W40 - SAE30
Major Service	2yrs/1000hrs of operation

## POWER PACK PRODUCED WITH:

- Compliance with AS2941-2013
- Oil Pressure Sender & Temp Sender
- SAE 11.5" Flywheel
- Mounting Feet
- Belt Guard
- Flexible Exhaust Coupling
- Condensation Trap & Muffler
- Pull to Stop Solenoid
- Oil & Coolant
- Jacket Heater

## ELECTRICAL

Starter Motor	24V - 7kW - Reduction Drive
Alternator	24V - 40Amp - External Regulator
Oil Pressure Sender	5 Bar (VDO Compatible)
Temp Sender	30 - 120°C
RPM Sensor	Magnetic Pulse Type - M18 x 1.5
Fuel STOP Solenoid	24V - Pull to Stop - Two Wire - Body Earth

## ENGINE SPECIFICATIONS

Fuel Consumption @ 75% Load - 2200rpm	.240gr/kWhr
Approx Fuel Consumption at 100% load - 2600rpm	50ltrs per/hour
Cooling Water Supply	2.9Ltrs/sec@20°C
Intake Air Flow	210ltrs/sec
Exhaust Pipe Size	5"/125mm
Exhaust Flow	710 ltrs/sec
Exhaust Heat Rejection	140kW
Heat Rejection to Atmosphere	15kW
Cooling System Heat Rejection	126kW
Exhaust Temp Max	620°C
Max Exhaust Backpressure	7kPa
Max Coolant Temp	85°C

## COOLING SYSTEM

Type	Heat Exchanger Cooled - Tube Type
------	-----------------------------------

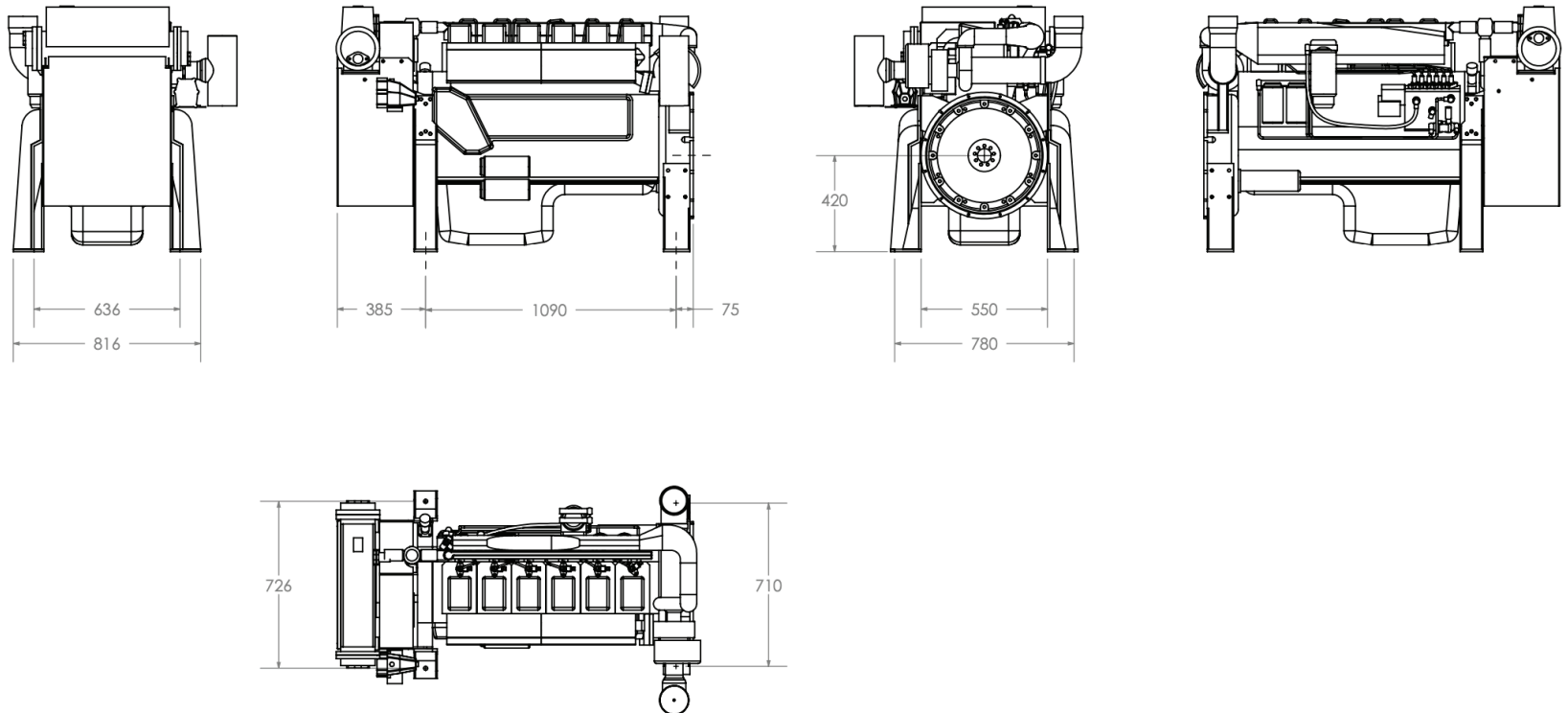
## ENGINE MOUNTING


Mounting Bolts	M16
----------------	-----

### Note:

Variations to engines may be made without notice.

# FIREPUMP DP6970T-CRDi DIESEL POWER PACK HEAT EXCHANGER COOLED



DRAWING TITLE	<b>DP6970T</b>	NOTES:  All dimensions are in mm	TOLERANCES:	ADDRESS: 38-40 LICOLA CRES DANDENONG SOUTH VIC 3175 PHONE: 1300 188 477	
SCALE	1:25				
DATE:	29/10/18				
DRAWN BY:					