

KEY FEATURES



SHORT MOTOR CONSTRUCTION

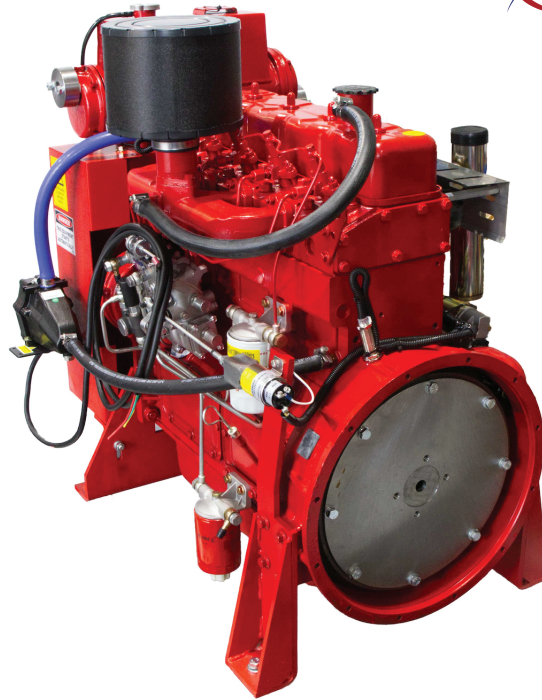
- Cast Iron Block
- Wet Liners
- Fully Floating Pistons
- Nodular Iron Crankshaft
- High Volume Oil Pump
- High Volume Oil Sump

CYLINDER HEAD

- Individual Cast Iron Cylinder Heads
- Adjustable Rocker Arms
- Rubber Valve Gasket

CONSTRUCTION

- Heavy Duty Design
- High Volume Cooling System
- Simple, Maintenance Free, High Pressure Fuel System
- Direct Injection Combustion Chamber
- P Type Injectors
- High Flow Fuel, Oil & Donaldson Air Filters



MAXIMUM POWER RATING - For 'HP' MULTIPLY x 1.34

Power Output Rated 41kW @ 3000rpm

Model	1500rpm	2000rpm	2500rpm	3000rpm
DP4350N	26kW	34kW	39kW	41kW

PRODUCT CHARACTERISTICS



DESIGN & QUALITY

BKB Group firepump engines offer industry leading value for money. Proven quality and Australian design, powering over thousands of firepumps nationwide. All engines come backed by a 2 year warranty and are constructed to last. When the job needs to be done, you can rely on BKB Engines to perform.



SERVICE KITS

All engines can be supplied with service kits. All parts used in service are readily available, high quality parts including Donaldson filters. Kits provide a complete ready package for servicing. Included in the kits are belt set, hose kit and all filters; oil, primary and secondary fuel and air cleaners.



CONTROLLER

The BKB Group diesel engine control system delivers simplicity and reliability. Proudly Australian designed and built to AS2941-2013 (Fixed Fire-Pumpset Systems). Available in 12V & 24V. Monitors, displays and records diesel engine information. The construction incorporates high quality industrial components and an advanced microprocessor controller.

DESIGN SPECIFICATIONS	
Model	DP4350N
Type	Inline 4 Cylinder - 2 Valve P/Cyl - OHV
Fuel	Direct Injection - Inline Pump - Mechanical Governor
Bore/Stroke	100 x 115
Capacity	3.6Ltrs
Compression	17:1
Intake	Natural
Cooling	Water
Voltage	12V
Min Speed	850rpm
Max Speed	3000rpm

SERVICE INFORMATION	
Fuel Filter	Donaldson P553004
Oil Filter	Donaldson P550934
Air Filter	Donaldson C085002
Oil Capacity	13 Ltrs
Recommended Battery - Min	600CCA / 90A/H
Bell Housing	SAE3
Cooling System Capacity	15ltrs
Drive	SAE 11.5"
Service Interval	First Service at 12month/ 150hrs then each 12month/250Hours
Coolant	Min 40% Glycol Mix
Oil Type	15W40 - SAE30

POWER PACK PRODUCED WITH:	
<ul style="list-style-type: none"> ▪ Compliance with AS2941-2013 ▪ Oil Pressure Sender & Temp Sender ▪ SAE 11.5" Flywheel ▪ Mounting Feet ▪ Belt Guard 	<ul style="list-style-type: none"> ▪ Flexible Exhaust Coupling ▪ Condensation Trap & Muffler ▪ Pull to Stop Solenoid ▪ Oil & Coolant ▪ Coolant Jacket Heater

ELECTRICAL	
Starter Motor	12V -3.6kW - Reduction Drive
Alternator	12V - 40Amp
Oil Pressure Sender	10 Bar (VDO Compatible)
Temp Sender	30 - 120°C
RPM Sensor	Magnetic Pulse Type - M18 x 1.5
Fuel Solenoid	12V - Pull to Stop - Two Wire - Body Earth

ENGINE SPECIFICATIONS	
Fuel Consumption @ 75% Load - 2200rpm	.250gr/kwhr
Approx Fuel Consumption at 100% load -2600rpm	11ltrs per/hour
Cooling Water Supply	.7Ltrs/Sec @ 20°C
Intake Air Flow	54ltrs/sec
Exhaust Pipe Size	2.5"/63mm
Exhaust Flow	189 ltrs/sec
Exhaust Heat Rejection	30.4kw
Heat Rejection to Atmosphere	3.8kW
Cooling System Heat Rejection	27.3kW
Exhaust Temp Max	600°C
Max Exhaust Backpressure	7kPa
Max Coolant Temp	85°C

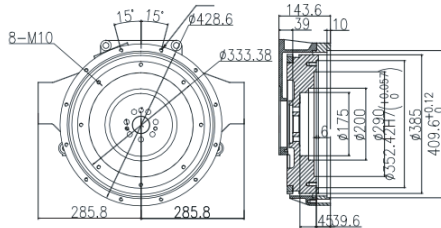
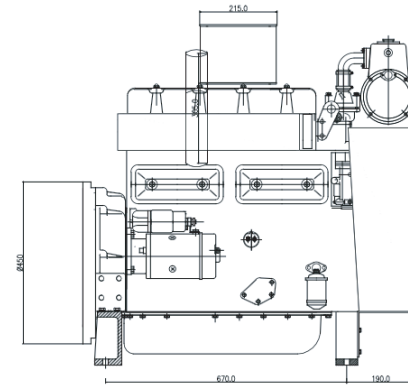
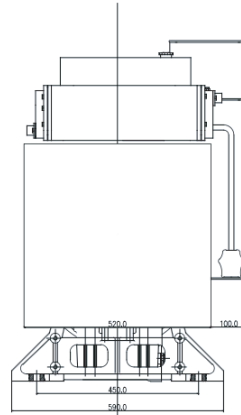
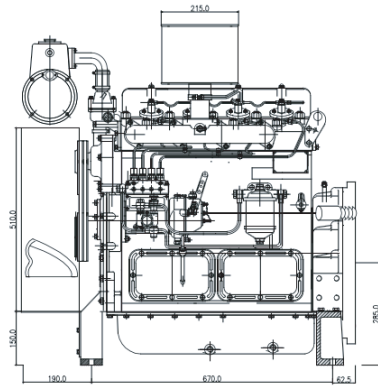
COOLING SYSTEM	
Type	Heat Exchanger Cooled - Tube Type

ENGINE MOUNTING	
Mounting Bolts	M16

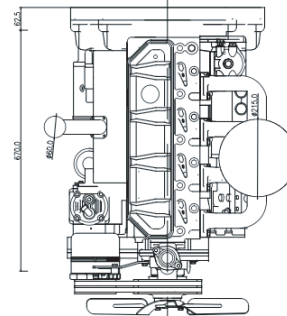
Note:

Variations to engines may be made without notice.

FIREPUMP DP4350N DIESEL POWER PACK HEAT EXCHANGER COOLED

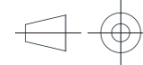


SAE 3 BELL HOUSING
SAE 11.5" FLYWHEEL



12	STOP SOLENOID	1
11	RADIATOR	1
10	SPEED CONTROL	1
9	EXHAUST OUT	1
8	RPM SENSOR	1
7	TEMP SENSOR	1
6	OIL SENSOR	1
5	OIL FILTER	1
4	SECONDARY FUEL FILTER	1
3	PRIMARY FUEL FILTER	1
2	AIR FILTER	1
1	MOUNT SUPPORT	4
ITEM:	DESCRIPTION:	QTY:

DRAWING TITLE:
DP-4350N/4400N, Heat Exchanger: General Arrangement



ADDRESS:
28 MARK ANTHONY DRIVE,
DANDENONG SOUTH, 3175

1	REVISED ENGINE DRAWING	04/07/2017	M.O.Y.
REV:	DESCRIPTION:	DATE:	DRAWN BY:

NOTES:
- ALL DIMENSIONS SHOULD BE VERIFIED BEFORE INSTALLATION.
- NO PORTION OF THIS DRAWING MAY BE REPRODUCED OR ALTERED WITHOUT WRITTEN PERMISSION FROM POWER INDUSTRIES AUSTRALIA.
- ALL DIMENSIONS ARE IN MM.

TOLERANCES:
ASSEMBLY DIMENSIONS ±3MM
FABRICATED DIMENSIONS ±2MM
MACHINING DIMENSIONS ±0.125MM
UNLESS SPECIFIED OTHERWISE

REVIEWED BY:
DWG NO: DWG-4400N.HX-01
SCALE: Not to Scale
REV: 1

PHONE NO:
1300 188 477